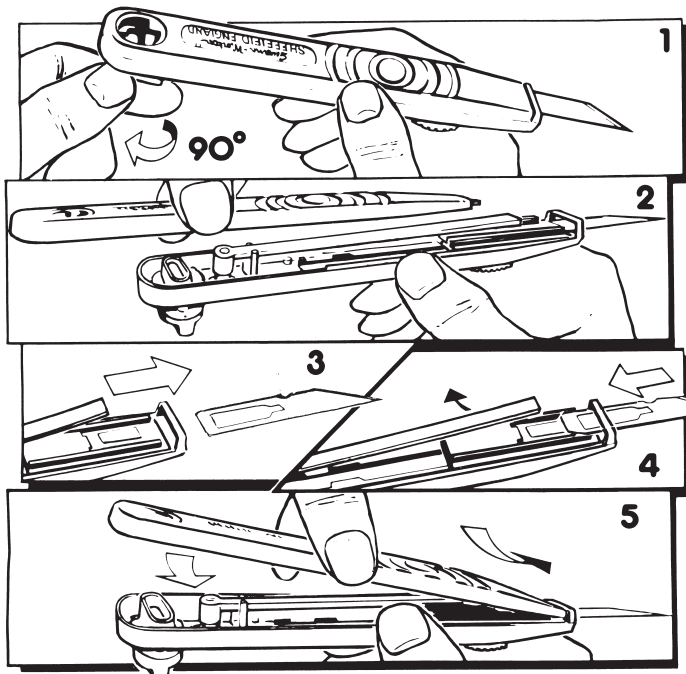


Swann-Morton®



ASSEMBLY INSTRUCTIONS

1. ASSEMBLE WITH BLADE CARRIER IN EXTENDED POSITION AND, WITH WHITE LOCKING BUTTON POINTING DOWNWARDS, TURN LOCK THROUGH 90° (Fig 1).
2. SEPARATE TOP HALF FROM BOTTOM HALF (Fig 2).
3. LIFT BLADE FROM CARRIER AND WITHDRAW (Fig 3).
4. INTRODUCE NEW BLADE UNDER RETAINER STRIP AND RE-SEAT ONTO CARRIER (Fig 4).
5. RE-ASSEMBLE TWO HALVES AND TURN LOCKING BUTTON BACK THROUGH 90° TO SECURE (Fig 5).