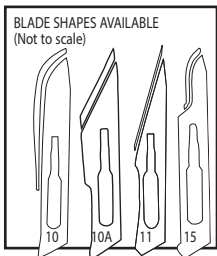
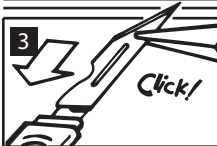
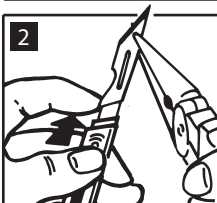
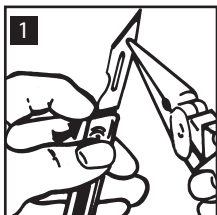


RETRACTAWAY BLADE REMOVAL AND FITTING



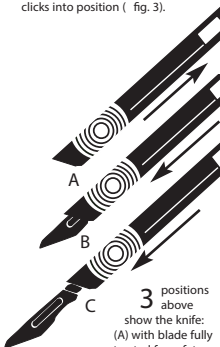
Blade removal

Fully extend blade, grip with pointed pliers halfway between tip and blade stop, avoiding cutting edge (fig. 1).

With index finger end, lift base of blade over locating slot and ease off with pliers (fig. 2).

Fitting a new blade:

Grip blade (as above) with pliers, avoiding contact with cutting edge. Slide blade into position in handle until blade slot locates fully over blade stop and clicks into position (fig. 3).



3 positions above show the knife:
(A) with blade fully retracted for safety whilst not in use.
(B) half extended position which is the position recommended for normal use.
(C) fully extended for blade-changing.

Swann-Morton®

Swann-Morton Limited,
Owlerton Green,
Sheffield S6 2BJ, England
Tel: 0114 234 4231
Fax: 0114 231 4966